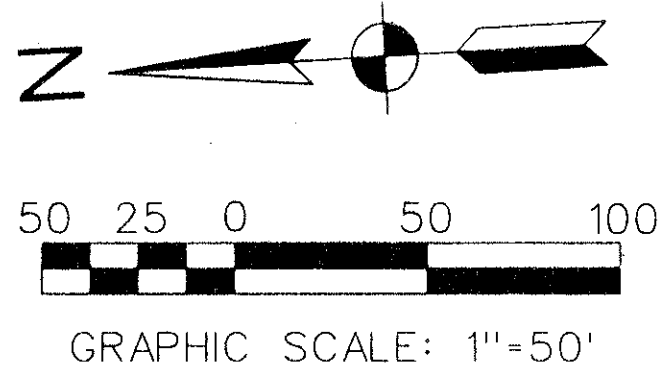


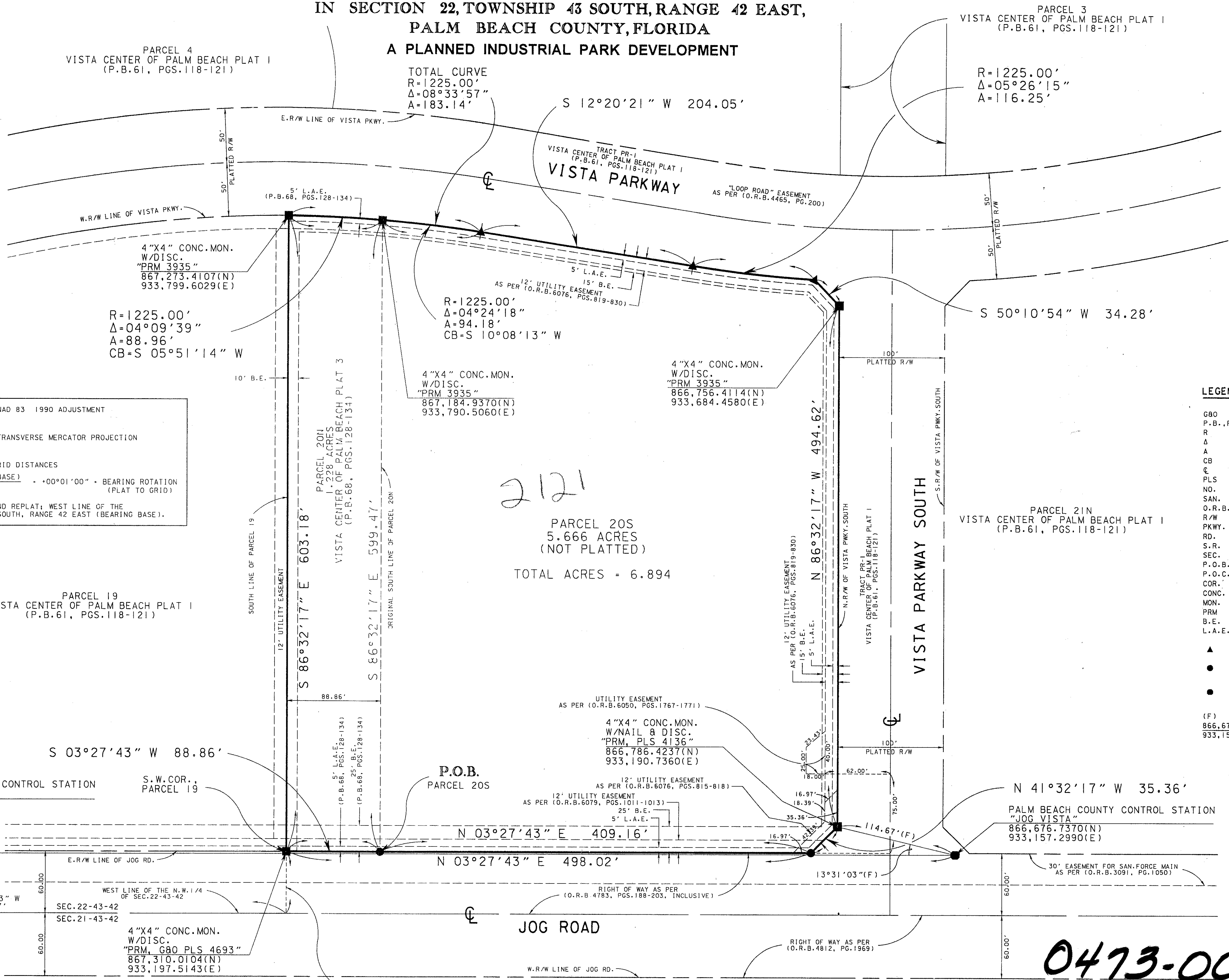
VISTA CENTER OF PALM BEACH PLAT 6
 BEING
 A REPLAT OF PARCEL 20N
 VISTA CENTER OF PALM BEACH PLAT 3
 PLAT BOOK 68, PAGES 128-134

0473-006

13



TOGETHER WITH
 A PORTION OF THE NORTHWEST QUARTER
 IN SECTION 22, TOWNSHIP 43 SOUTH, RANGE 42 EAST,
 PALM BEACH COUNTY, FLORIDA
 A PLANNED INDUSTRIAL PARK DEVELOPMENT



*PET. 84-130
 ALLOC. #0001
 5/2/2/D*

COORDINATES SHOWN ARE GRID DATUM - NAD 83 1990 ADJUSTMENT
 ZONE - FLORIDA EAST
 LINEAR UNIT - U.S. SURVEY FEET
 COORDINATE SYSTEM 1983 STATE PLANE TRANSVERSE MERCATOR PROJECTION
 ALL DISTANCES ARE GROUND
 SCALE FACTOR - 1.0000291430
 GROUND DISTANCES X SCALE FACTOR = GRID DISTANCES
 SOUTH 03°27'43" WEST (PLAT BEARING) . . . +00°01'00" . . . BEARING ROTATION
 SOUTH 03°28'43" WEST (GRID BEARING) (PLAT TO GRID)
 COMMON LINE BETWEEN EXISTING PLAT AND REPLAT; WEST LINE OF THE
 N.W. 1/4 OF SECTION 22, TOWNSHIP 43 SOUTH, RANGE 42 EAST (BEARING BASE).

LEGEND	
GBO	GREENHORNE & O'MARA, INC.
P.B., PG.	PLAT BOOK AND PAGE
R	RADIUS OF CURVE
Δ	CENTRAL ANGLE OF CURVE
A	ARC LENGTH OF CURVE
CB	CHORD BEARING OF CURVE
€	CENTERLINE
PLS	PROFESSIONAL LAND SURVEYOR
NO.	NUMBER
SAN.	SANITARY
O.R.B., PG.	OFFICIAL RECORD BOOK, PAGE
R/W	RIGHT OF WAY
PKWY.	PARKWAY
RD.	ROAD
S.R.	STATE ROAD
SEC.	SECTION
P.O.B.	POINT OF BEGINNING
P.O.C.	POINT OF COMMENCEMENT
COR.	CORNER
CONC.	CONCRETE
MON.	MONUMENT
PRM	PERMANENT REFERENCE MONUMENT
B.E.	BUFFER EASEMENT
L.A.E.	LIMITED ACCESS EASEMENT
▲	1/2" IRON ROD WITH CAP, LB 3935
●	1/2" IRON ROD WITH CAP, GBO, PLS 4693
●	PALM BEACH COUNTY BRASS DISK SET IN CONCRETE
(F)	FIELD MEASURED
866,676.7370(N)	NORTHING (FEET)(GRID)
933,157.2990(E)	EASTING (FEET)(GRID)

BOOK 75 PAGE 13
 FLOOD ZONE A0-1
 QUAD # 81
 SE 84-130
 PUD NAME PIPD
 2214312

TAZ-871

75/13

0473-006

VISTA CENTER OF PALM BEACH PLAT 6 SHEET 2 OF 2

